



## **CITY OF SUMTER: FLOOD RECOVERY OPERATIONS**

### ***What happened in Sumter?***

- In just two days, 21.5 inches of rain overwhelmed the City and its sewer and storm water systems. Flood-related debris backed up the City's catch basins. When the floodwaters washed out streets and substrate, multiple water and sewer mains failed. As a result, the City instituted a boil-water advisory that affected 26,542 water customers and 17,081 sewer customers.
- The City sustained approximately 75 road closures, either because the roads were washed away or were made impassable by flooding.
- Infiltration of storm water into the City's sanitary sewer lines caused multiple manholes to overflow.
- The Swan Lake dam, located in the City's marquee tourist attraction, suffered a 20'x20'x10' breach. Normally, Swan Lake averages a depth of around 6½ feet. After the flood, Swan Lake is only 1½ feet deep.
- Swan Lake–Iris Gardens suffered significant damages to many of its walking trails, buildings, equipment, supplies, and its infrastructure.
- The dam at Shaw–Sumter Farms did not suffer a complete breach, but floodwaters overtopped the dam and caused major damage to the property and its infrastructure.
- The Sumter Fire Department's Training Facility was completely flooded. Nearly 4 feet of water inundated the facility, causing significant damage to the building, its contents, and public safety equipment such as computers, two-way radio equipment, personal protective equipment, safety gear, and uniforms.
- The Sumter Police Department lost 7 fully accessorized patrol vehicles during flood response operations. Today, the Sumter Police Department is compromised in providing full patrol coverage because of a lack of vehicles.
- Multiple City-owned buildings, including the historic Opera House, were damaged when the unprecedented rain event breached roofs and caused damage to ceilings, insulation, drywall, and carpet.
- Riley Park, Palmetto Park, and Shaw Skate Park all sustained significant damages.

### ***Where is Sumter now?***

- The City of Sumter's sewer collection system may have suffered hidden damages. Accordingly, the City is now fully inspecting and investigating the lines.
- Some major storm drain systems (such as Mallard Drive and Bultman Drive) may require complete replacement. The City must confirm the scope of repair or the need for replacement prior to undertaking these projects. The City will likely perform additional CCTV investigations of pipe conditions.
- The floodgate at the Shaw-Sumter Farm will likely require complete replacement.
- The Sumter Fire Department is seeking a temporary location for training, after being displaced from the permanent Training Grounds. The Department may lease trailers for the grounds of the Training Facility while it develops plans for the permanent repair phase.



- Although the City’s vehicles were insured, the insurance proceeds will not cover at least \$200,000 of the full replacement costs.
- The table below itemizes quantified and known damages to date. The damage estimate will almost certainly increase as the City continues to inspect, test, repair, and replace its mission-critical infrastructure and property.

<b>City of Sumter, SC - DR 4241 Project List</b>	
<b>Project Name</b>	<b>Initial Assessment Amount</b>
SUM01 - Emergency Protective Measures (Category B)	\$939,909.82
SUM02 - Road Repairs (Category C)	\$75,000.00
SUM03 - Storm Water Repairs (Category D)	\$1,500,000.00
SUM04 - Swan Lake Dam Repairs (Category D)	\$300,000.00
SUM05 - Public Services Construction & Electrical Repairs (Category E)	\$300,000.00
SUM06 - Pump Stations Repairs (Category F)	\$125,000.00
SUM07 - Multiple Water Line Sites (Category F)	\$300,000.00
SUM08 - Swan Lake Park Repairs (Category G)	\$200,000.00
SUM09 - Police & Fire Contents Replacement (Category E)	\$300,000.00
SUM10 - Shaw - Sumter Farm (Booth Lake) Dam Repairs (Category D)	\$500,000.00
SUM11 - Fire Training Facility Permanent Repairs (Category E)	\$200,000.00
SUM12 - Sewer Collection System Repairs (Category F)	\$500,000.00
SUM13 - Police Vehicle Replacement (Category B)	\$201,107.23
SUM14 - Volunteer Labor and Donated Resources (Category B)	\$0.00
SUM15 - Program Management Services (Category E)	\$652,922.05
<b>Total Estimated Program Cost to Date</b>	<b>\$6,093,939.10</b>

*\*Debris Removal (Category A) operations are being handled by the State.*

**What are Sumter’s on-going needs?**

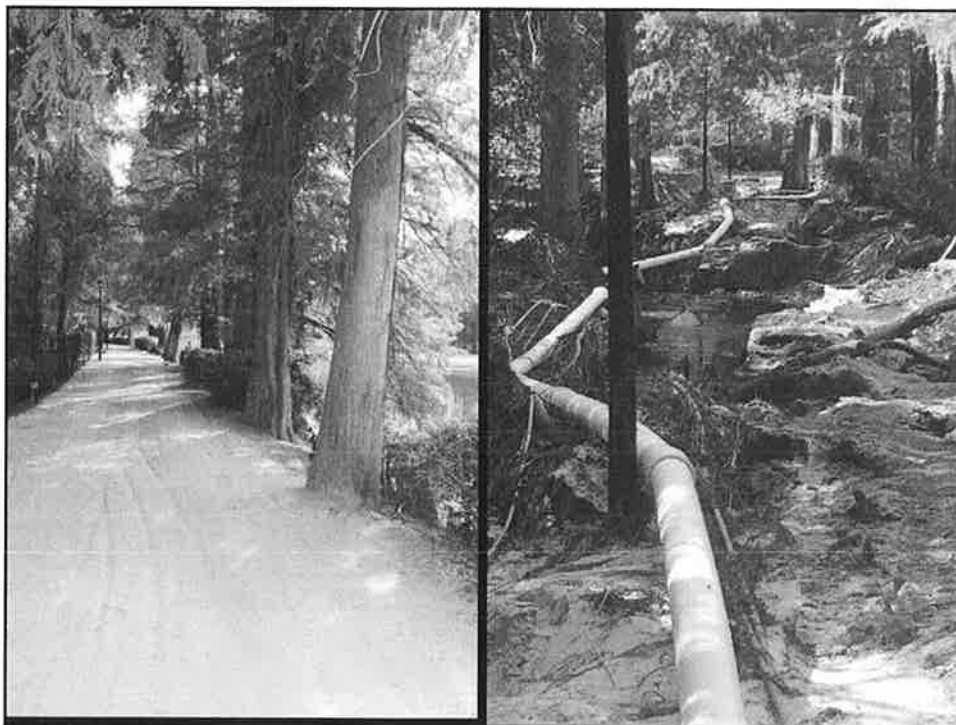
- The total, long-term recovery costs associated with this event are currently unknown. Estimated costs, however, are growing every day.
- FEMA requires a 25% cost share match. Although the City has been financially conservative for many years, the cost match will quickly deplete the City’s reserves.
- The City has no means or funding sources to recapitalize its stormwater system. A satisfactory solution will require a collaborative approach between the City, the County, SCDOT, and the State.



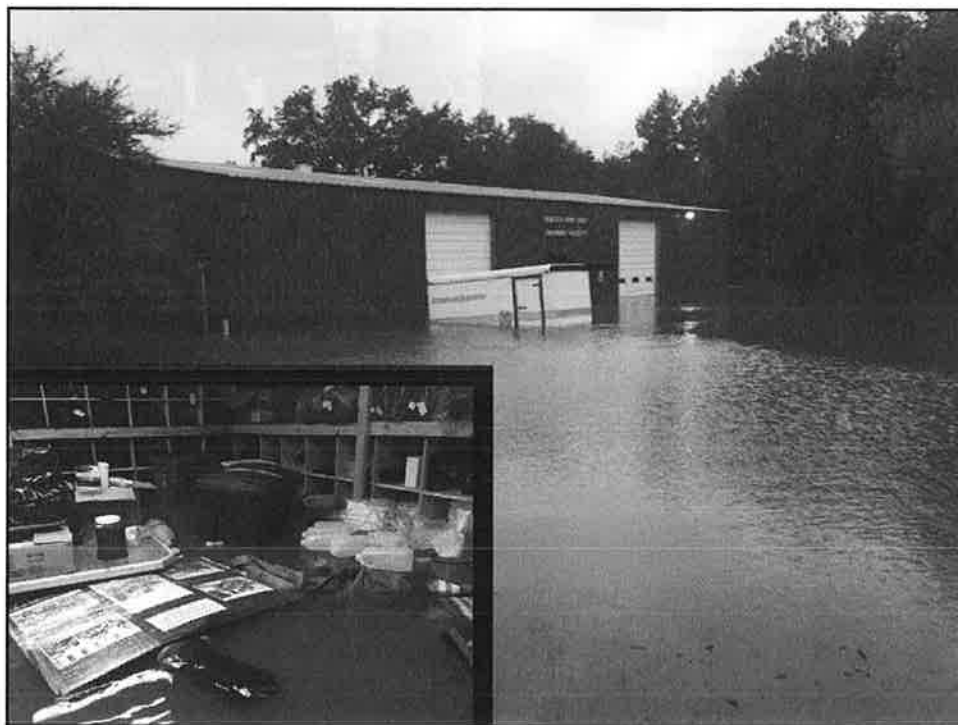
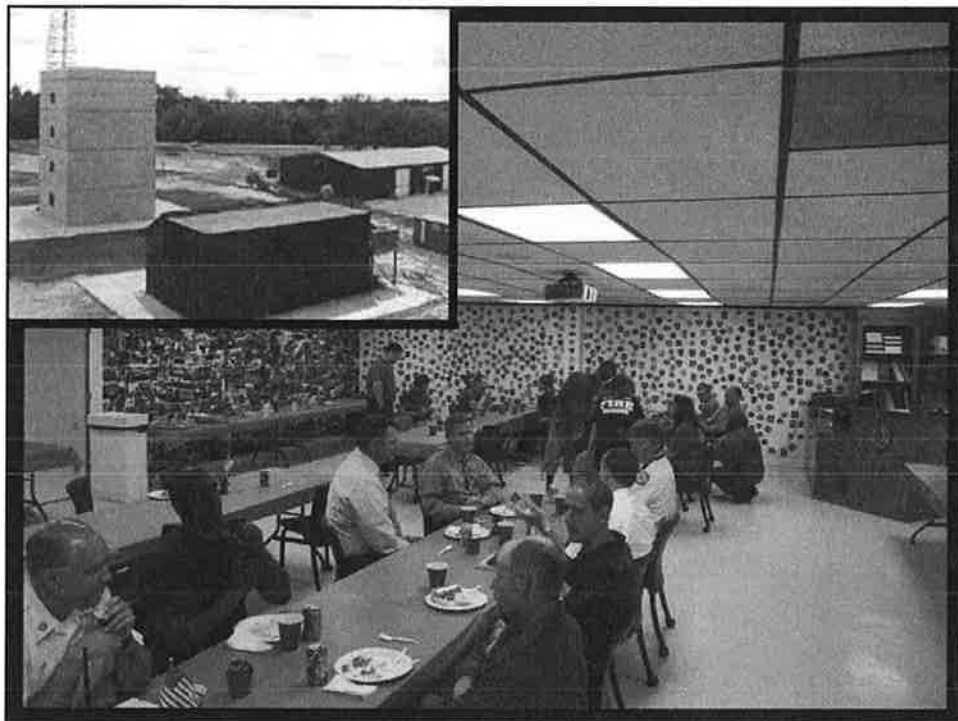
## City of Sumter

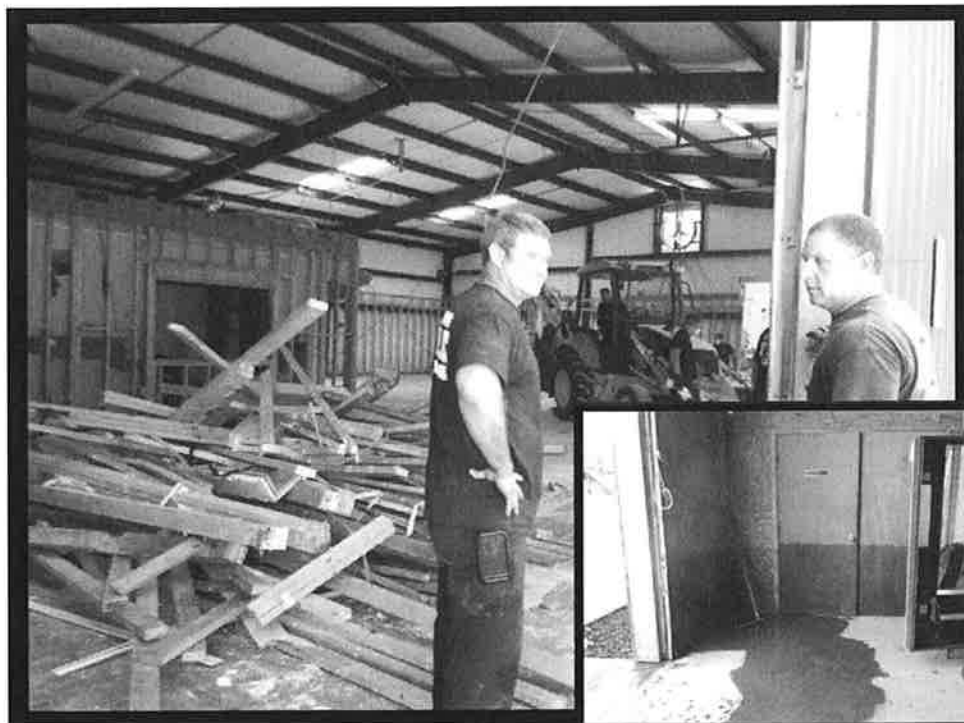
October 2015 Flood



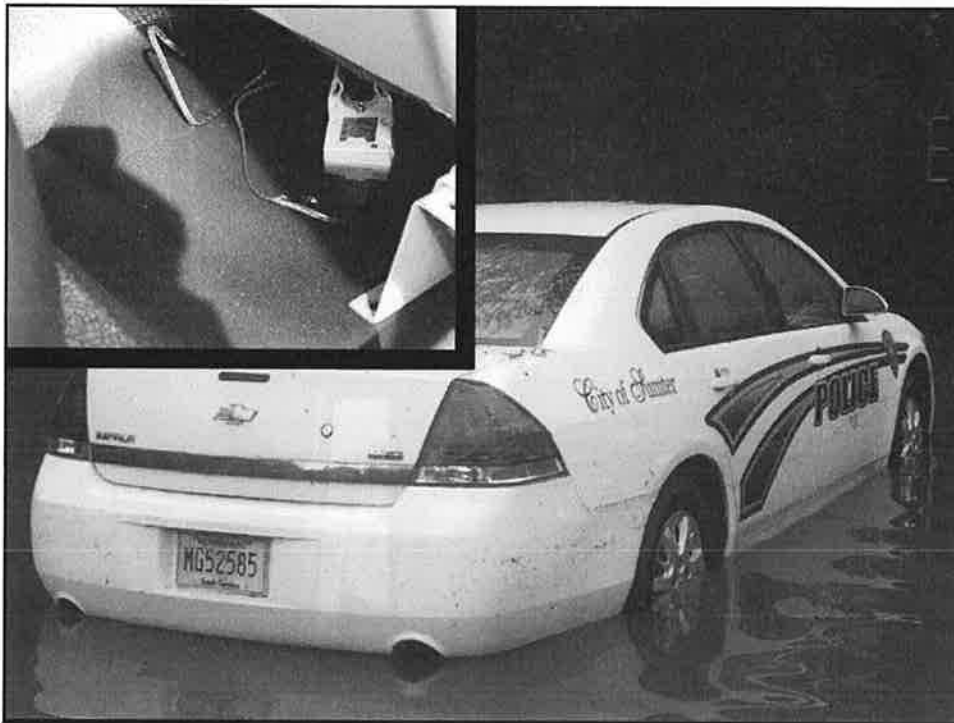






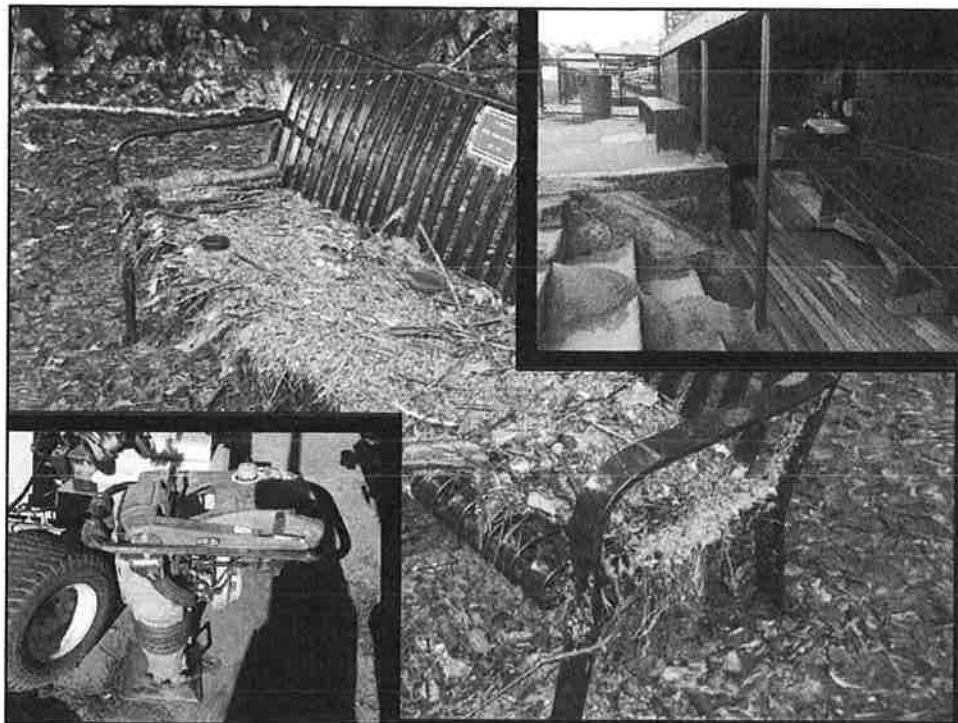






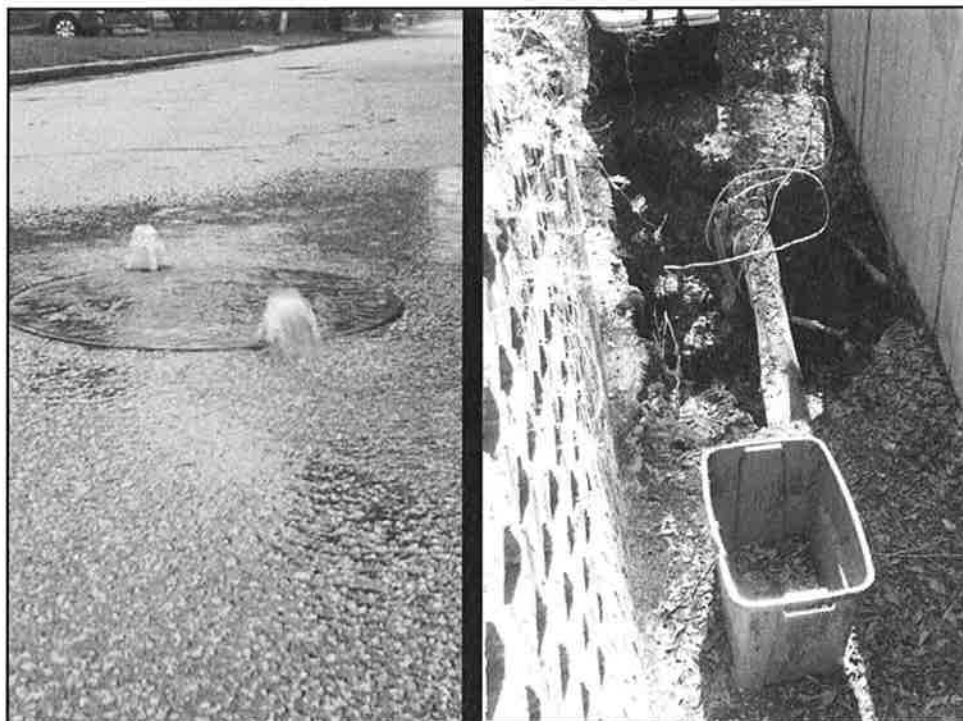
















### City of Sumter, SC - DR 4241 Project List

Project Name	Initial Assessment Amount
SUM01 - Emergency Protective Measures (Category B)	\$939,909.82
SUM02 - Road Repairs (Category C)	\$75,000.00
SUM03 - Storm Water Repairs (Category D)	\$1,500,000.00
SUM04 - Swan Lake Dam Repairs (Category D)	\$300,000.00
SUM05 - Public Services Construction & Electrical Repairs (Category E)	\$300,000.00
SUM06 - Pump Stations Repairs (Category F)	\$125,000.00
SUM07 - Multiple Water Line Sites (Category F)	\$300,000.00
SUM08 - Swan Lake Park Repairs (Category G)	\$200,000.00
SUM09 - Police & Fire Contents Replacement (Category E)	\$300,000.00
SUM10 - Shaw - Sumter Farm (Booth Lake) Dam Repairs (Category D)	\$500,000.00
SUM11 - Fire Training Facility Permanent Repairs (Category E)	\$200,000.00
SUM12 - Sewer Collection System Repairs (Category F)	\$500,000.00
SUM13 - Police Vehicle Replacement (Category B)	\$201,107.23
SUM14 - Volunteer Labor and Donated Resources (Category B)	\$0.00
SUM15 - Program Management Services (Category E)	\$652,922.05
<b>Total Estimated Program Cost to Date</b>	<b>\$6,093,939.10</b>





